

INDEX

Elements

PLANTER

FRAME

PLANTER

RECEPTICAL

RAL

16

Laminates

16

Metal

6

Lacquer

16

Wood Veneer

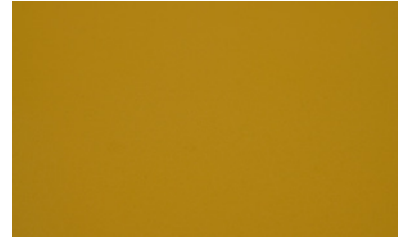
10



RAL

FRAME / PLANTER

The powder coating process provides a more durable finish than liquid paints can offer while still providing an attractive finish. In addition to being durable, powder coating is an attractive choice due to its environmental advantages. Please take a look at our elaborately selected standard RAL colors where applicable.



RAL 1004



RAL 1019



RAL 3002



RAL 3005



RAL 5003



RAL 6020



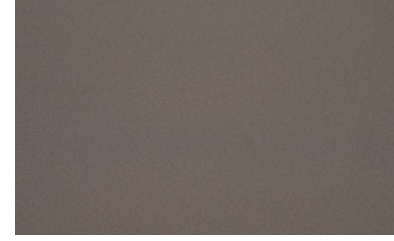
RAL 7022



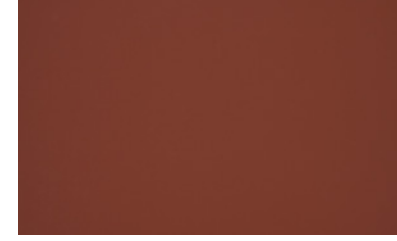
RAL 7039



RAL 7044



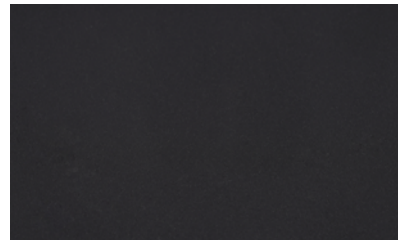
RAL 7048



RAL 8004



RAL 8014



RAL 9005



RAL 9006



RAL 9002

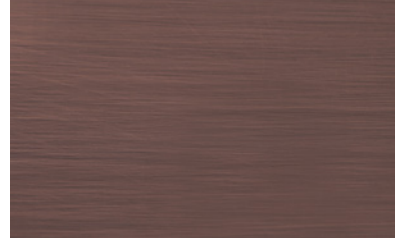


RAL 9016

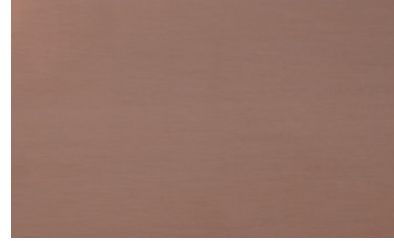


METAL

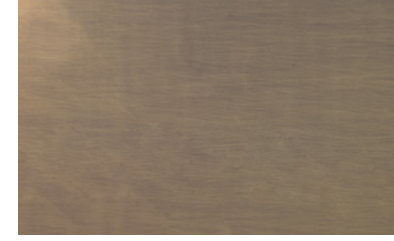
FRAME / PLANTER



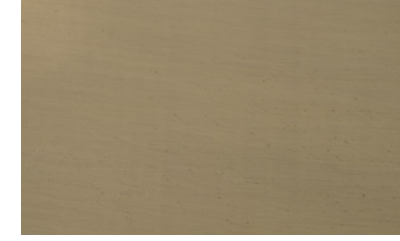
Brushed Dark Copper*



Brushed Light Copper*



Brushed Dark Gold*



Brushed Light Gold*



Black Chrome*



Chrome**

**Chrome finish has no additional upcharge.

*The below products are not available in the marked Metal finishes:

Planter:

Elements:

ELBG193



LAMINATES

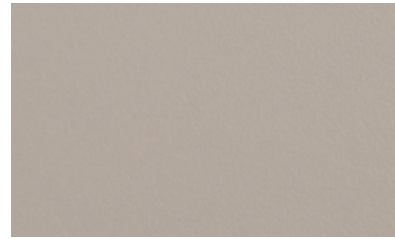
RECEPTICAL / PLANTER

Laminate is a manufactured product. It is firmer and heat and scratch-resistant, making laminate easier to care for than natural wood or veneer.

Please take a look at our elaborately selected standard laminate colors where applicable.



LAMF 3103



LAMF 3104



LAMF 3148



LAMF 3253



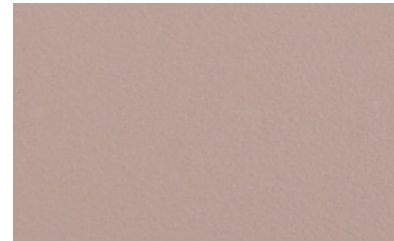
LAMF 3240



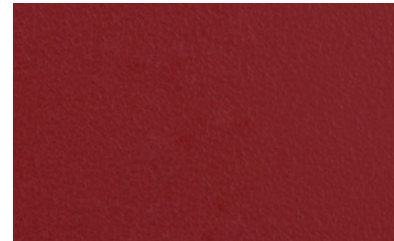
LAMF 3116



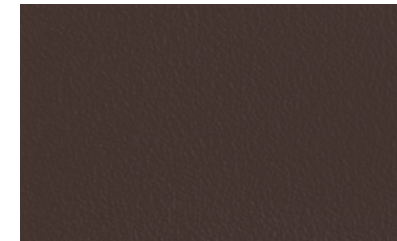
LAMF 3245



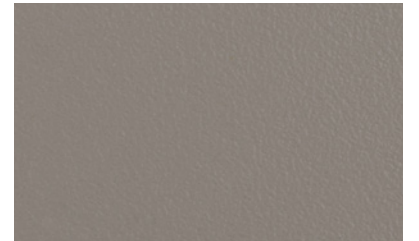
LAMF 3247



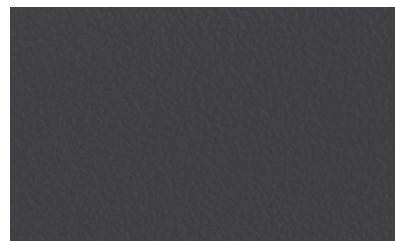
LAMF 3158



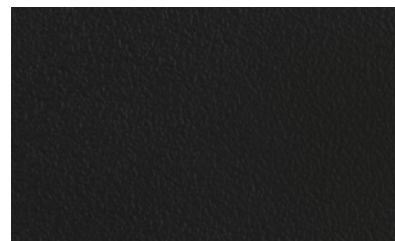
LAMF 3164



LAMF 3151



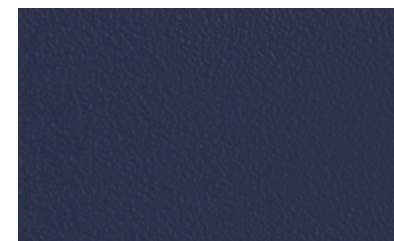
LAMF 3155



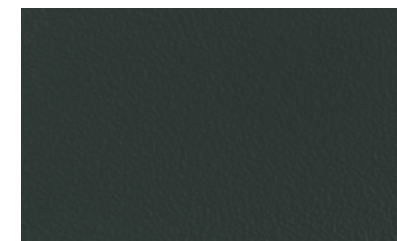
LAMF 3190



LAMF 3150



LAMF 3169



LAMF 3238



LACQUER

RECEPTICAL / PLANTER

A clear lacquered finish is the most common, maintenance-free, durable finish for wooden surfaces.

Please refer to our elaborately selected standard lacquer colors where applicable.



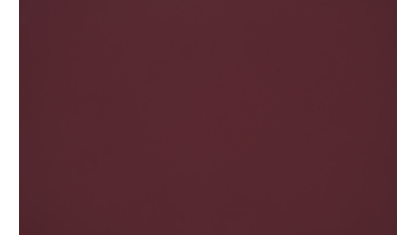
RAL 1004



RAL 1019



RAL 3002



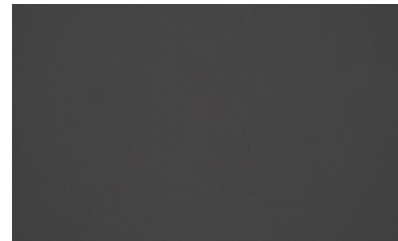
RAL 3005



RAL 5003



RAL 6020



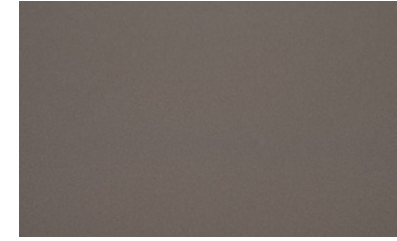
RAL 7022



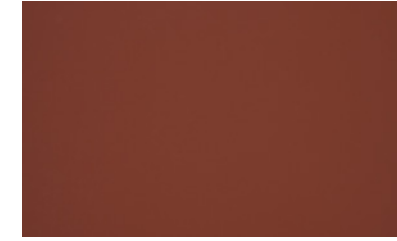
RAL 7039



RAL 7044



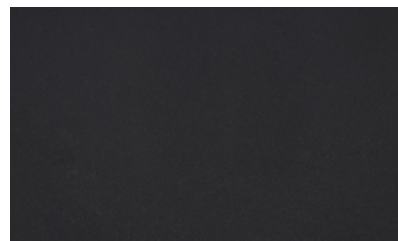
RAL 7048



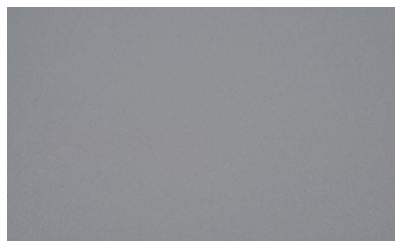
RAL 8004



RAL 8014



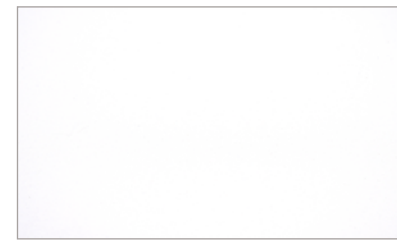
RAL 9005



RAL 9006



RAL 9002



RAL 9016



WOOD VENEER

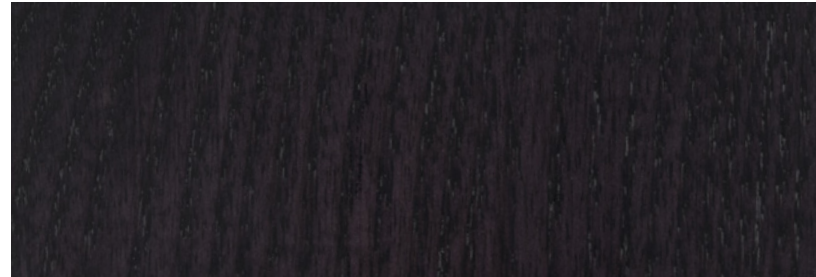
RECEPTICAL / PLANTER

Because of its beauty, elegance, functionality, and sturdiness, wood is an all-time preferred furniture material and blends easily with any theme and style.

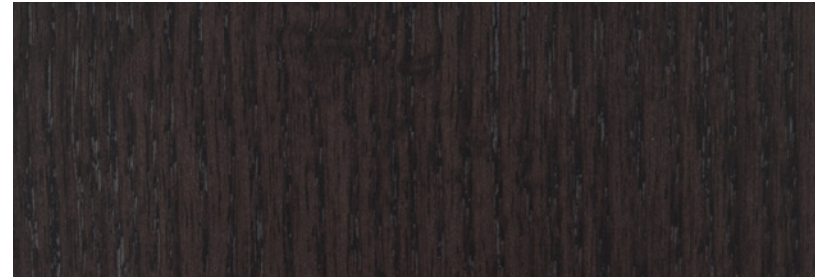
Wood is a natural and heterogeneous material; therefore, end products will never have the same appearance but will have their unique texture.

* Actual size of the printed area is 200x133 mm.

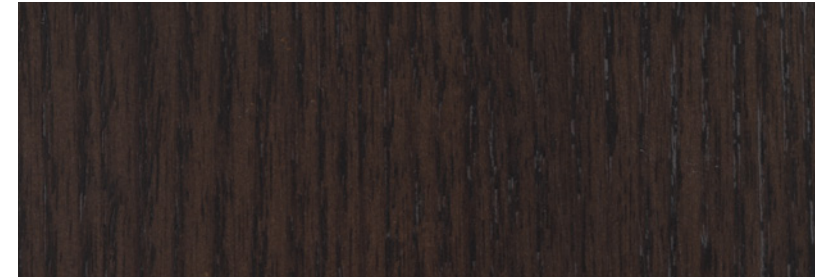
* Size of the section view 64x60 mm.



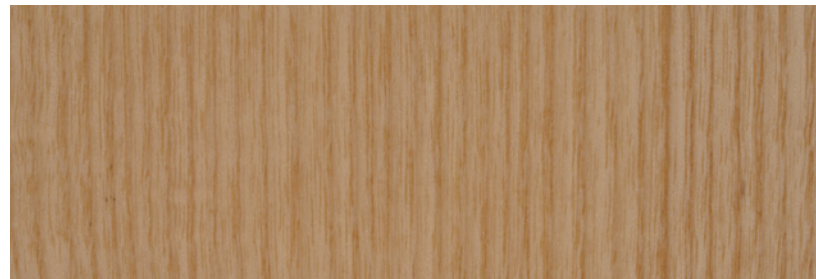
WO-10 ASH*



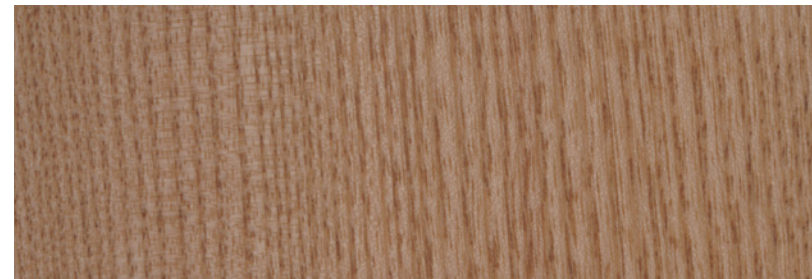
WO-09 ASH*



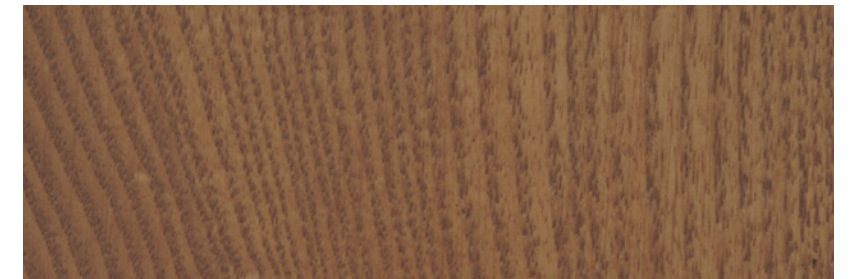
WO-08 ASH*



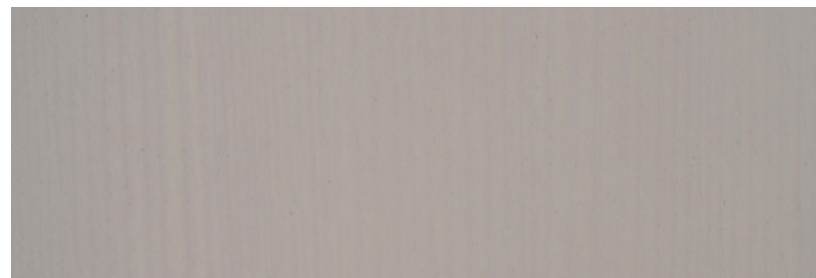
WO-03 ASH*



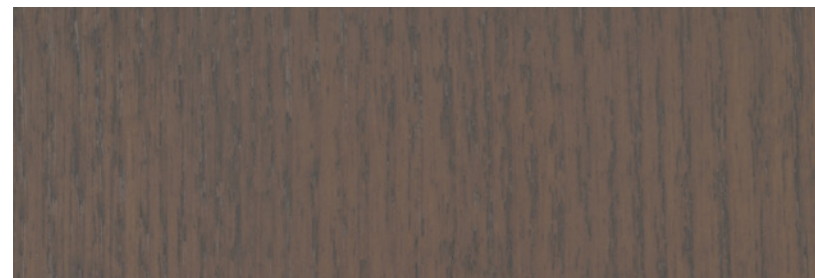
WO-04 ASH*



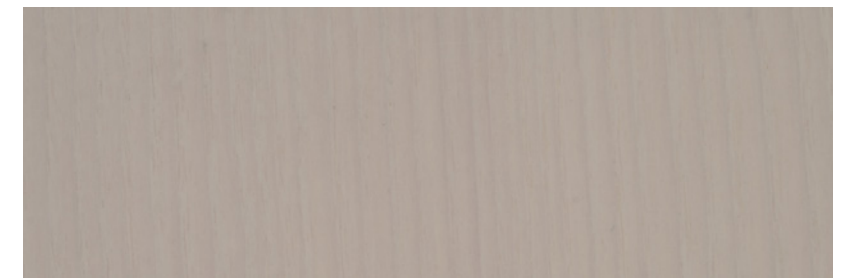
WO-05 ASH*



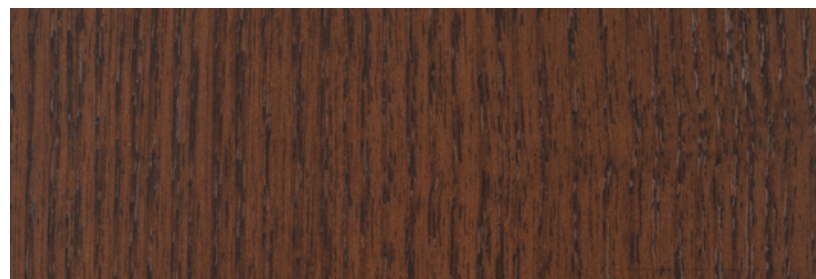
WO-01 ASH*



WO-06 ASH*



WO-02 ASH*



WO-07 ASH*