



RAL



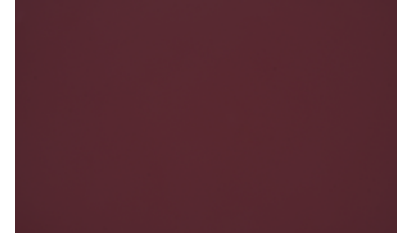
RAL 1004



RAL 1019



RAL 3002



RAL 3005



RAL 5003



RAL 6020



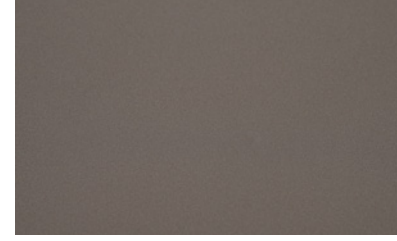
RAL 7022



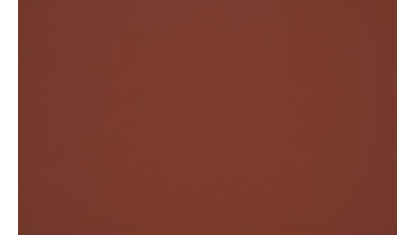
RAL 7039



RAL 7044



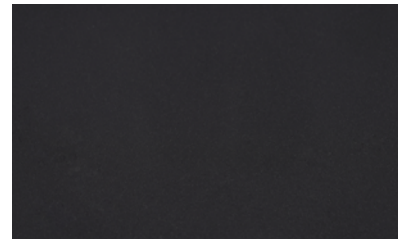
RAL 7048



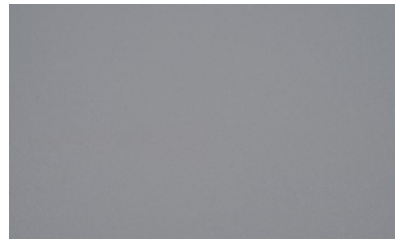
RAL 8004



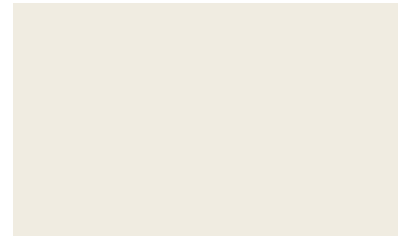
RAL 8014



RAL 9005



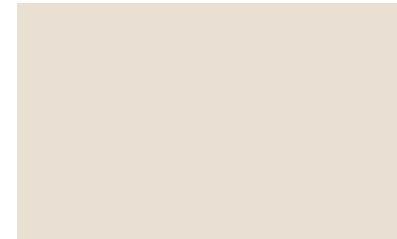
RAL 9006



RAL 9010



RAL 1044



RAL 9001



RAL 9002



RAL 9016

Power coating process provides a more durable finish than liquid paints can offer, while still providing an attractive finish.

In addition to being durable, powder coating is an attractive choice due to environmental advantages.

Please refer our elaborately selected standard RAL colors where is applicable.



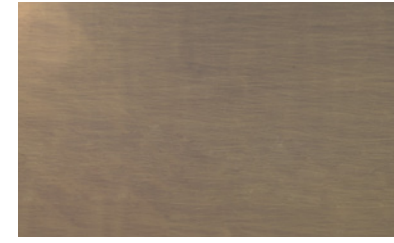
METAL



Brushed Dark Copper*



Brushed Light Copper*



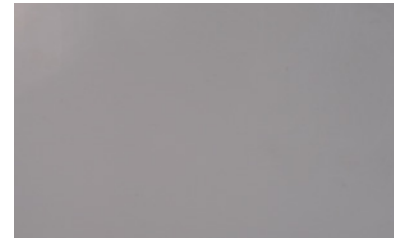
Brushed Dark Gold*



Brushed Light Gold*



Black Chrome*



Chrome

Power coating process provides a more durable finish than liquid paints can offer, while still providing an attractive finish.

In addition to being durable, powder coating is an attractive choice due to environmental advantages.

Please refer our elaborately selected standard RAL colors where is applicable.

*Black Chrome and Brushed colors are subject to extra charge.



LACQUER



RAL 1004



RAL 1019



RAL 3002



RAL 3005



RAL 5003



RAL 6020



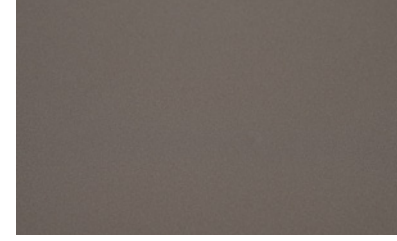
RAL 7022



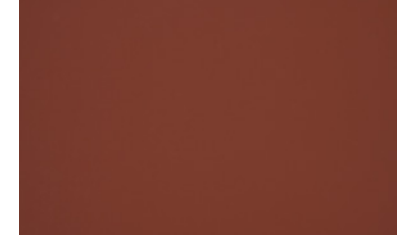
RAL 7039



RAL 7044



RAL 7048



RAL 8004



RAL 8014



RAL 9005



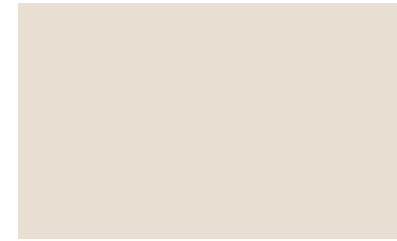
RAL 9006



RAL 9010



RAL 1044



RAL 9001



RAL 9002



RAL 9016

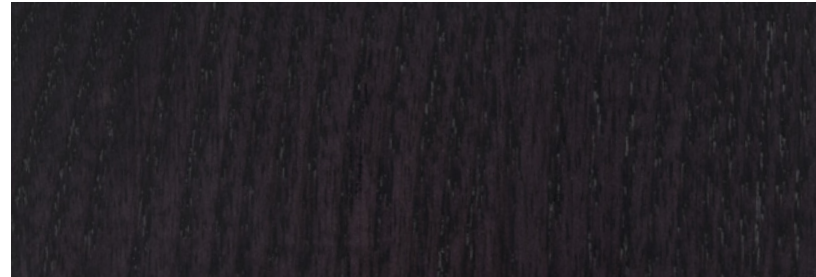
A clear lacquered finish is by far the most common maintenance-free and durable finish for wooden surfaces.

Please refer our elaborately selected standard lacquer colors where is applicable.

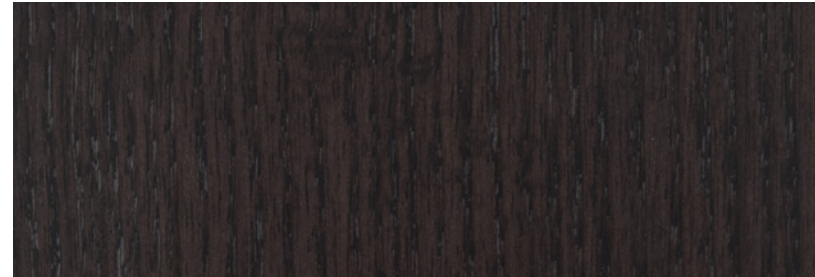


WOOD

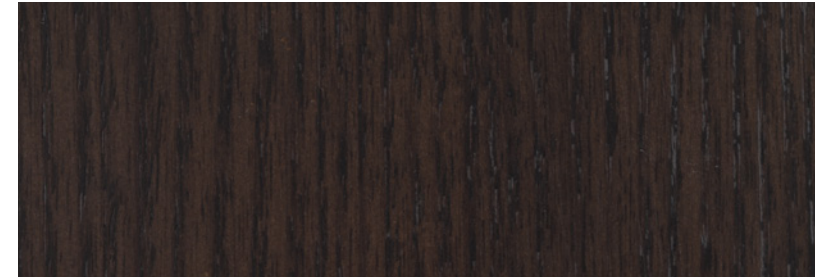
VENEER



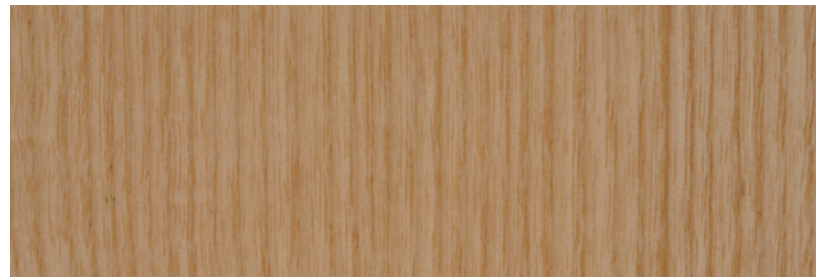
WO-10 ASH



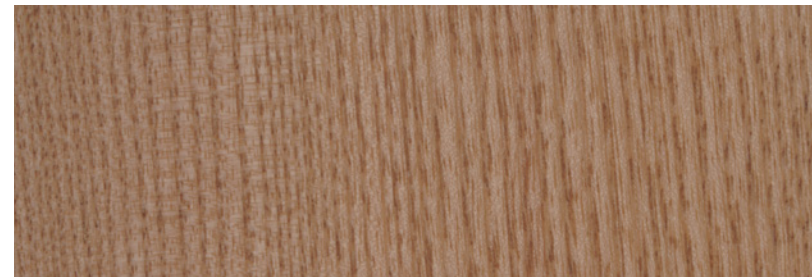
WO-09 ASH



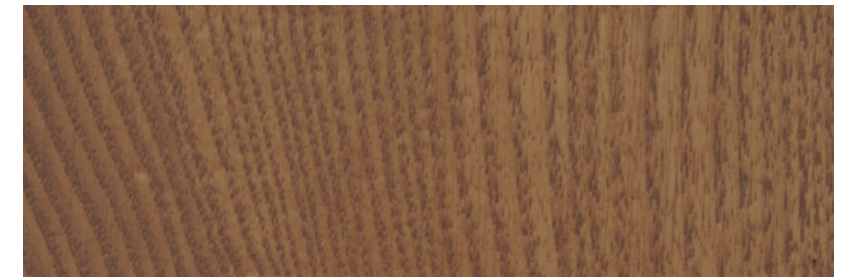
WO-08 ASH



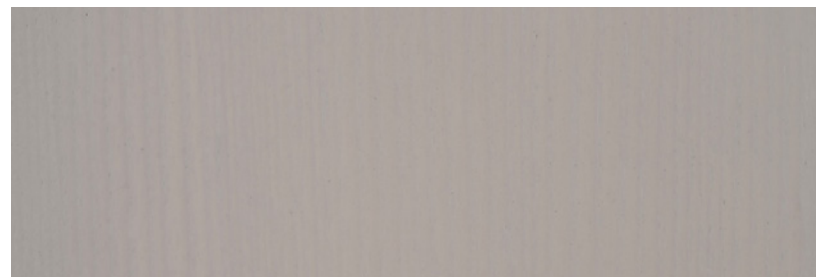
WO-03 ASH



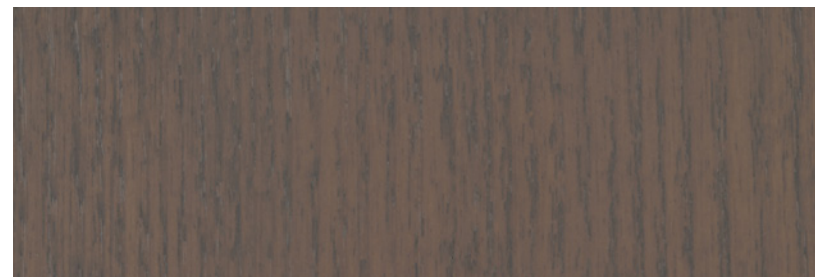
WO-04 ASH



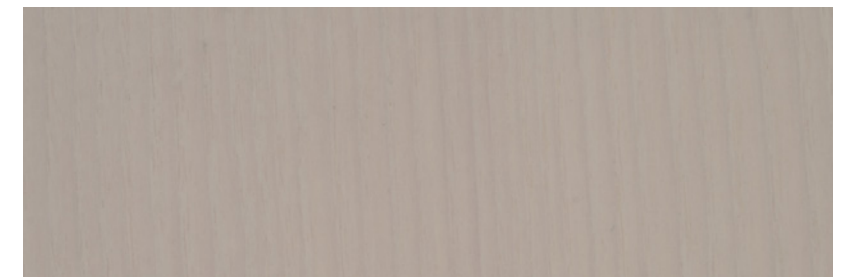
WO-05 ASH



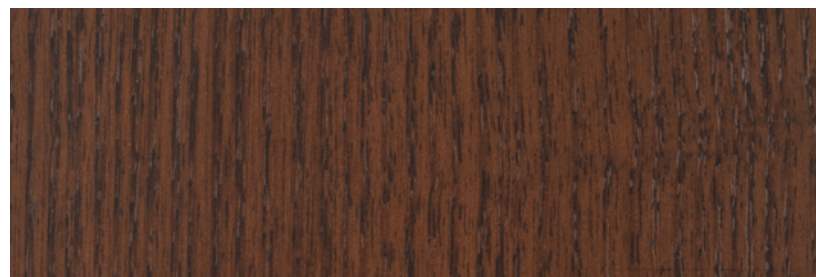
WO-01 ASH



WO-06 ASH



WO-02 ASH



WO-07 ASH

Because of its beauty, elegance, functionality, sturdiness, wood is an all the time preference as furniture material and it is easy blend with any theme and style.

Wood is a natural and heterogeneous material therefore end products will ever have the exact same appearance, will have its very own and unique texture.

* Actual size of the printed area is 200x133 mm.

* Size of the section view 64x60 mm.