

INDEX

Clapp

King

Lopp

Mishell

Muse

Sosa

TABLE

Powder Coated RAL

Metal

Wood Veneer

Solid Wood

FRAME

11

1

10

3

TABLE

Wood Veneer

Lacquered MDF

Solid Wood

TOP

10

8

3



RAL

FRAME / TABLE

Power coating process provides a more durable finish than liquid paints can offer, while still providing an attractive finish. In addition to being durable, powder coating is an attractive choice due to environmental advantages. Please refer our elaborately selected standard RAL colors where is applicable.



Light Grey*



True Grey*



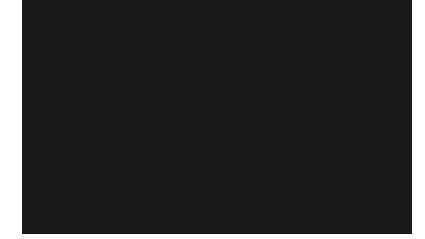
Deep Grey*



Dark Graphite*



New Quartz*



Dark Brown*



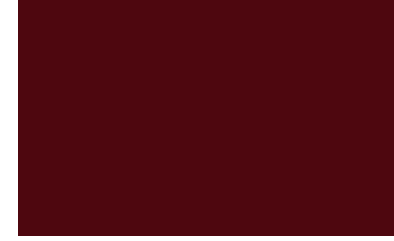
Black*



Mint*



Sand*



Burgundy*



Tropic*

*The below products are not available in the marked RAL finishes:

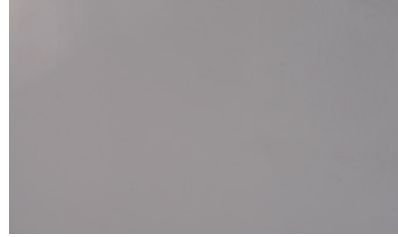
Coffee & Occasional Tables:

Clapp:	CLSD, CLSM
King:	KISO
Mishell:	MISMDJ, MISDDJ
Muse:	MSSLDD



METAL

FRAME / TABLE



Chrome**

**Chrome finish has no additional upcharge.

*The below products are not available in the marked Metal finishes:

Coffee & Occasional Tables:

Mishell:

MSSML, MISMDJ, MISDDJ, MSSOL, MISMPL, MISDPL

Muse:

MSSLDLD



WOOD VENEER

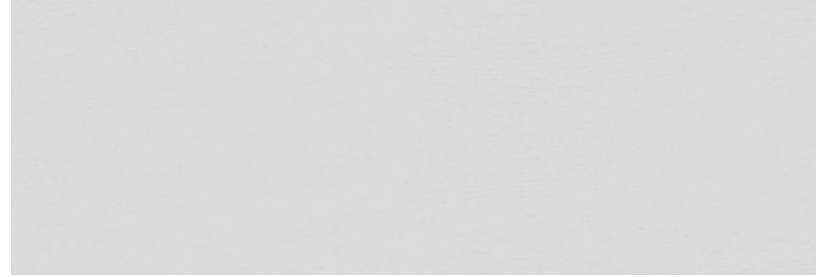
FRAME / TABLE

Because of its beauty, elegance, functionality, sturdiness, wood is an all the time preference as furniture material and it is easy blend with any theme and style.

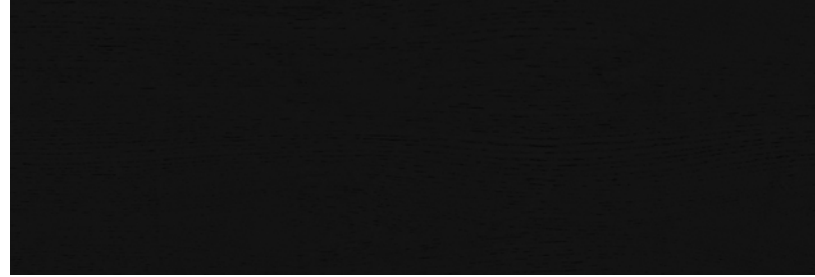
Wood is a natural and heterogeneous material therefore end products will ever have the exact same appearance, will have its very own and unique texture.

* Actual size of the printed area is 200x133 mm.

* Size of the section view 64x60 mm.



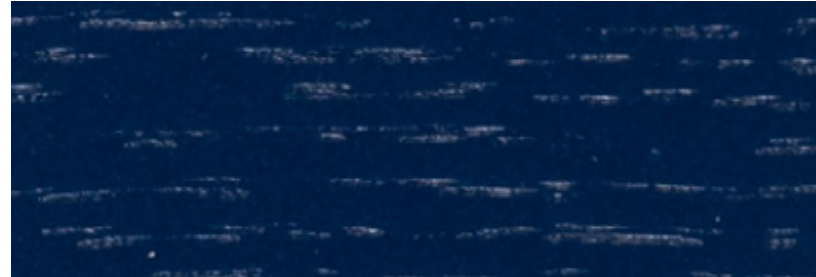
Oak White Lacquered 4949*



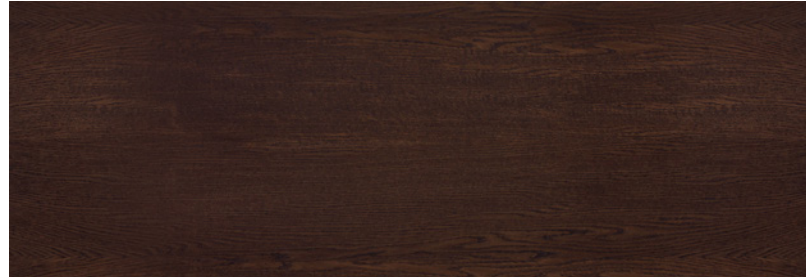
Oak Black Lacquered 4950*



Bleached Oak 4954M*



Oak Ocean 4957*



Smoked Oak 4955M*

*The following product codes are not available in all marked Wood Veneer finishes:

Coffee & Occasional Table:

King:	KISO
Mishell:	MISMPL, MISDPL
Muse:	MSSOFNL, MSSMFNL



WOOD VENEER

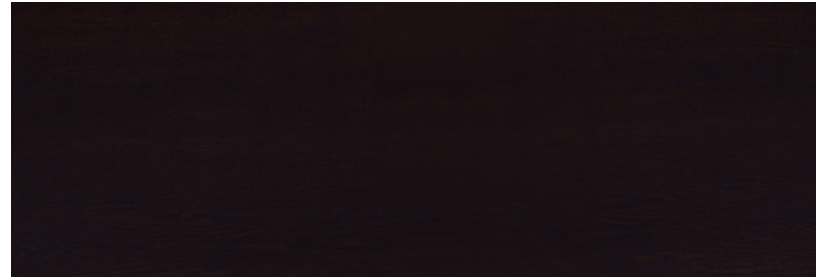
FRAME / TABLE

Because of its beauty, elegance, functionality, sturdiness, wood is an all the time preference as furniture material and it is easy blend with any theme and style.

Wood is a natural and heterogeneous material therefore end products will ever have the exact same appearance, will have its very own and unique texture.

* Actual size of the printed area is 200x133 mm.

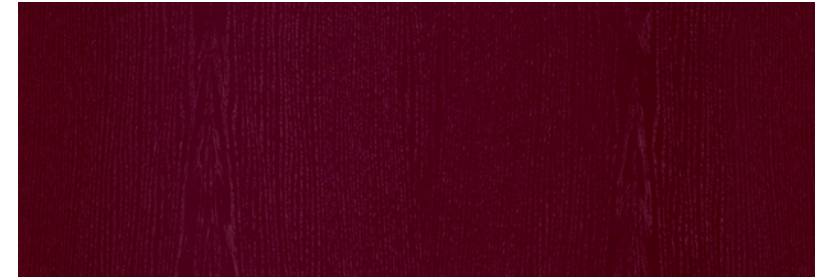
* Size of the section view 64x60 mm.



Blackened Oak 4956M*



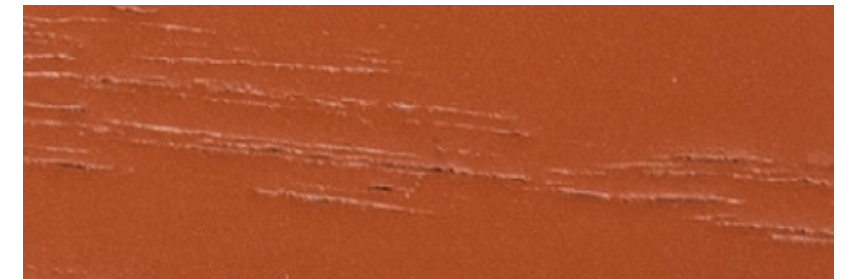
Natural Oak 4900M*



Oak Burgundy 4951*



Oak Tropic 4952*



Oak Corten 4958*

*The following product codes are not available in all marked Wood Veneer finishes:

Coffee & Occasional Table:

King:	KISO
Mishell:	MISMPL, MISDPL
Muse:	MSSOFNL, MSSMFNL



SOLID WOOD FRAME / TABLE

Because of its beauty, elegance, functionality, sturdiness, wood is an all the time preference as furniture material and it is easy blend with any theme and style.

Wood is a natural and heterogeneous material therefore end products will ever have the exact same appearance, will have its very own and unique texture.

* Actual size of the printed area is 200x133 mm.

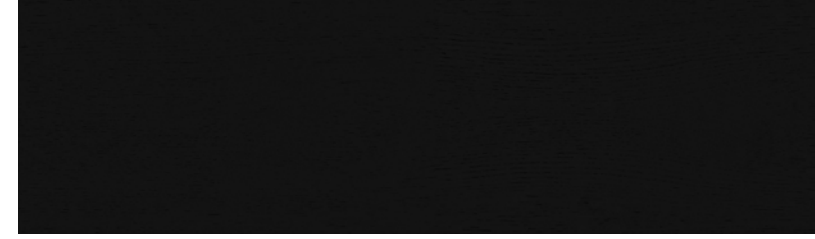
* Size of the section view 64x60 mm.



Natural Oak 4900M*



Natural Walnut 4100M*



Lacquered Black Oak 4950*

*The following product codes are not available in all marked Wood Veneer finishes:

Desking:

Lopp:

LOTM



WOOD VENEER

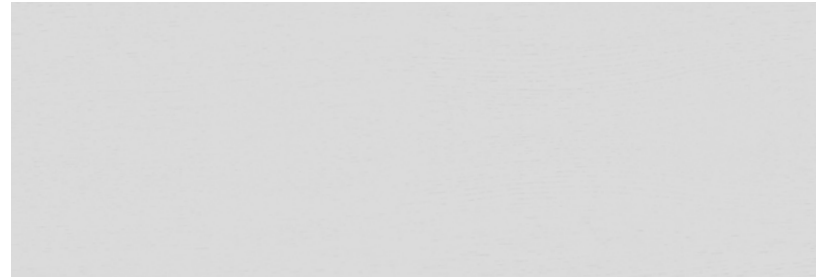
TOP / TABLE

Because of its beauty, elegance, functionality, sturdiness, wood is an all the time preference as furniture material and it is easy blend with any theme and style.

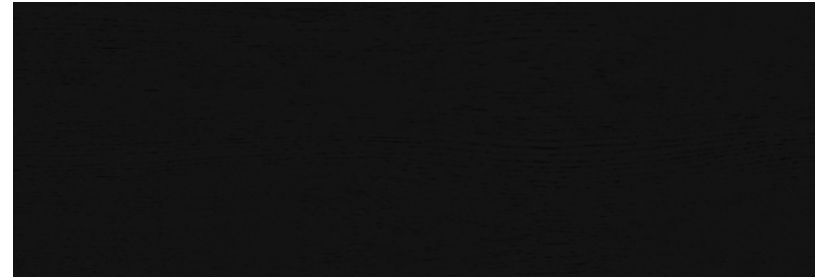
Wood is a natural and heterogeneous material therefore end products will ever have the exact same appearance, will have its very own and unique texture.

* Actual size of the printed area is 200x133 mm.

* Size of the section view 64x60 mm.



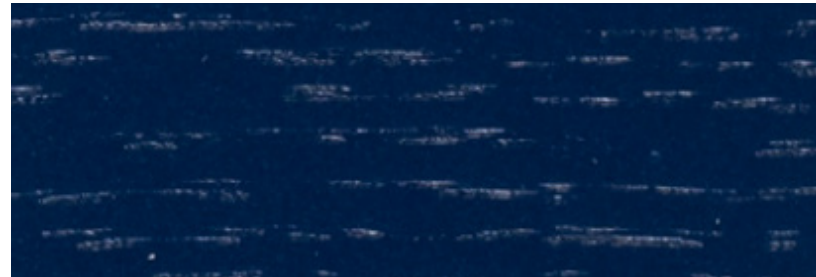
Oak White Lacquered 4949



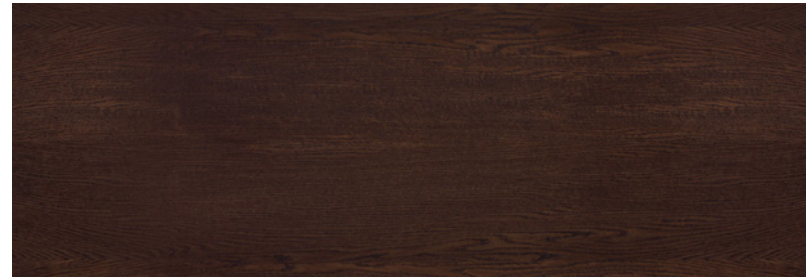
Oak Black Lacquered 4950



Bleached Oak 4954M



Oak Ocean 4957



Smoked Oak 4955M



WOOD VENEER

TOP / TABLE

Because of its beauty, elegance, functionality, sturdiness, wood is an all the time preference as furniture material and it is easy blend with any theme and style.

Wood is a natural and heterogeneous material therefore end products will ever have the exact same appearance, will have its very own and unique texture.

* Actual size of the printed area is 200x133 mm.

* Size of the section view 64x60 mm.



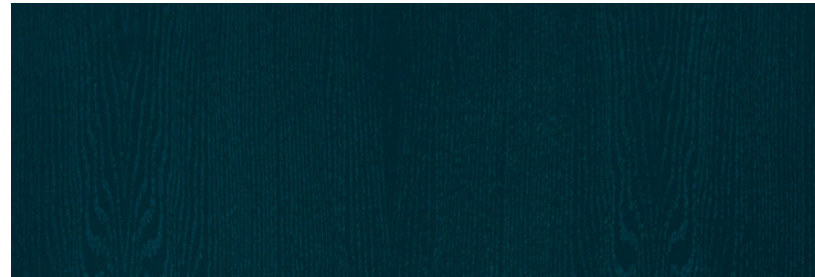
Blackened Oak 4956M



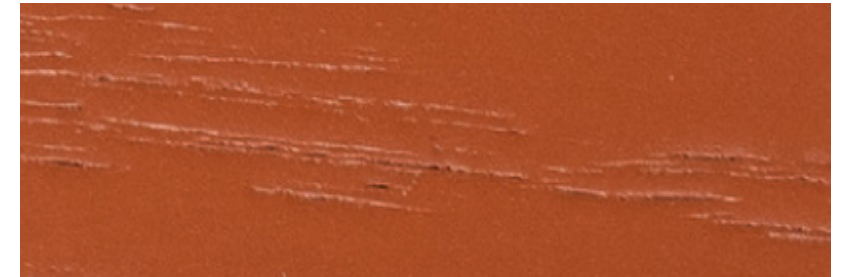
Natural Oak 4900M



Oak Burgundy 4951



Oak Tropic 4952



Oak Corten 4958



LACQUERED MDF

TOP / TABLE

Power coating process provides a more durable finish than liquid paints can offer, while still providing an attractive finish. In addition to being durable, powder coating is an attractive choice due to environmental advantages. Please refer our elaborately selected standard RAL colors where is applicable.



True Grey*



Deep Grey*



Dark Graphite*



Dark Brown*



Black*



Mint*



Sand*



Burgundy*

*The below products are not available in the marked Lacquered Oak/MDF finishes:

Coffee & Occasional Table:

- Clapp: CLSM, CLSD
- Muse: MSSOFNL, MSSMFNL, MSSLDLD
- Sosa: SASKD, SAWKM, SAWPD



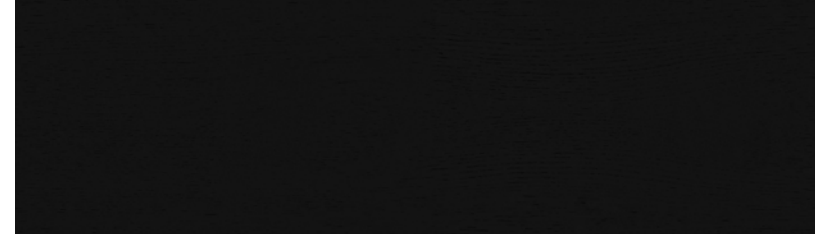
SOLID WOOD TOP / TABLE



Natural Oak 4900M*



Natural Walnut 4100M*



Lacquered Black Oak 4950*

Because of its beauty, elegance, functionality, sturdiness, wood is an all the time preference as furniture material and it is easy blend with any theme and style.

Wood is a natural and heterogeneous material therefore end products will ever have the exact same appearance, will have its very own and unique texture.

* Actual size of the printed area is 200x133 mm.

* Size of the section view 64x60 mm.

*The below products are not available in the marked Solid Wood finishes:

Coffee & Occasional Table:

King: KISO
Mishell: MISMPL, MISDPL
Muse: MSSOFNL, MSSMFNL

Desking:

Lopp: LOTM